



# Microsoft® System Center Configuration Manager

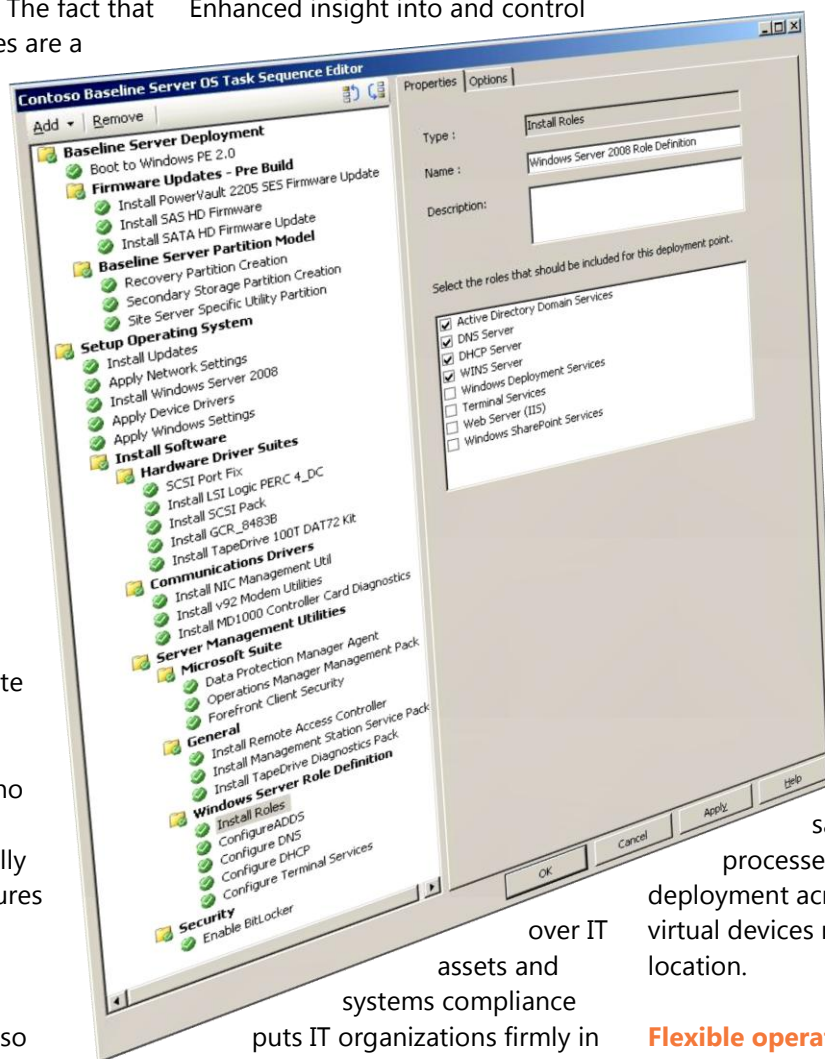
*Assess, Deploy and Update from Desktops to Datacenters and Beyond*

Enterprises rely on IT today more than ever before. Consequently, IT organizations are hard-pressed to provide end-to-end service delivery while ensuring that all systems are up-to-date and secure. The fact that today's IT infrastructures are a complex and evolving mix of operating systems, applications and devices complicates this objective. Added to this is the additional challenge of managing geographically dispersed and mobile workforces.

As the complexity and rate of change continues to increase, many IT organizations find it difficult to execute the changes effectively and efficiently. Manual change processes can no longer support the complex and dynamically changing IT infrastructures of today. To manage change effectively, IT organizations must automate IT processes so that global changes can occur with little or no IT staff intervention. System Center Configuration Manager helps IT organizations effectively manage change in today's dynamic IT infrastructures. Through streamlined, policy-based

automation, IT administrators can comprehensively assess, deploy and update their servers, clients and mobile devices across physical, virtual and distributed systems. Enhanced insight into and control

easy-to-use solution that increases IT efficiency and lets enterprises maximize their technology investments while controlling management costs.



## A Comprehensive Deployment Solution

Configuration Manager is a comprehensive deployment solution that lets IT administrators deploy operating systems, applications, and software and hardware updates to the clients, servers and mobile devices across their distributed network. Administrators can leverage the

same tools and processes for end-to-end deployment across physical and virtual devices regardless of their location.

## Flexible operating system deployment

For operating system deployments, Configuration Manager provides a highly automated solution that helps IT administrators assess, migrate and deploy Windows server and client operating systems. Administrators can securely deploy

over IT assets and systems compliance puts IT organizations firmly in control of their IT infrastructure. Built on key Microsoft technologies such as Windows Server Update Services, Active Directory, and the Windows architecture and leveraging System Center's knowledge-driven IT management, Configuration Manager provides an



and configure servers and clients from any previous state, including bare-metal deployments. An advanced and flexible task sequencer automates execution across multiple deployment steps, allowing administrators to execute automated deployment activities in the proper order. For example, administrators can prepare partition models, update BIOS, install firmware, and deploy operating systems, drivers, applications and updates in a single, repeatable distribution. Use of a driver catalog that dynamically deploys drivers at runtime significantly reduces the number of OS images that administrators need to build and maintain.

For migrations, Configuration Manager lets IT administrators quickly assess which machines across the enterprise are ready to upgrade to Windows Server 2008, Windows Vista and Office 2007 with pre-defined, integrated reporting and query tools built on the Application Compatibility Toolkit (ACT). Integrated migration tools collect a user's documents and settings that so that they can be restored properly after the migration is complete.

### Policy-based software distribution

Configuration Manager also includes an integrated, policy-based software distribution and update solution that allows IT administrators to seamlessly deploy and update physical and virtual applications across their entire distributed enterprise.

Administrators can distribute applications and updates to all of their IT systems including desktops, servers, laptops and handheld devices. For mobile and geographically dispersed users that rarely connect to the network, Configuration Manager includes Internet Based Client Management (IBCM), which securely delivers applications and software updates across the Internet.

Configuration Manager gives IT administrators complete control over the entire distribution process. Explicit targeting and scheduling allow them to define which devices receive updates and when. They can also control the run behavior for package distributions which helps improve the delivery success for offline or low-bandwidth scenarios.

Configuration Manager offers support for branch offices, which

are often difficult to manage due to low bandwidth and limited or no administrative resources. Through the intelligent use of bandwidth aware distribution points that can leverage existing hardware – such as a workstation—Configuration Manager provides effective management of branch offices and other global, disparate locations.

A software distribution home page lets administrators monitor the status of their distributions across the enterprise and helps ensure that devices comply with software advertisements.

### Software update management

Software Update Management in Configuration Manager is built on the familiar Windows Server Update Services (WSUS) providing a unified infrastructure for all Microsoft, third party and custom line of business application software updates, both security and non-security related. Custom software update catalogs, built by partners like Citrix and Adobe, are included with Configuration Manager and enable IT administrators to deploy application and security updates for third-party and custom line-of-business applications and operating systems. Together with System

*“Because Configuration Manager is built upon core Microsoft technologies such as Windows® Software Update Services and Network Access Protection, we expect to reap significant benefits in enhanced end-point management and security without increasing ongoing IT training and support costs”*

Brian J. Uzwiak, Manager of Network Technology Services, Wake Forest Baptist Medical Center

© 2006 Microsoft Corporation. All rights reserved. The information contained in this document represents the current view of Microsoft Corporation on the issues discussed as of the date of publication. Because Microsoft must respond to changing market conditions, it should not be interpreted to be a commitment on the part of Microsoft, and Microsoft cannot guarantee the accuracy of any information presented after the date of publication. The information represents the product at the time this document was printed and should be used for planning purposes only. Information subject to change at any time without prior notice. This data sheet is for informational purposes only. MICROSOFT MAKES NO WARRANTIES, EXPRESS OR IMPLIED, IN THIS SUMMARY.

Microsoft, Active Directory, Windows, the Windows logo, and Windows Server System are either registered trademarks or trademarks of Microsoft Corporation in the United States and/or other countries.

All other trademarks are property of their respective owners.

Microsoft®  
**System Center**

Knowledge-Driven IT Management

Center Virtual Machine Manager, Configuration Manager provides a single process for updating both physical and virtual (VHD) systems.

Configuration Manager gives IT administrators granular control over when changes occur in their IT environment, helping them define, maintain and exceed company Service Level Agreements (SLAs). Using Maintenance Windows, IT administrators can specify an allowed period of time that Configuration Manager 2007 can use to perform configuration changes to a managed collection of computers. They can directly tie the frequency and duration of the Maintenance Windows to SLA for a collection of computers, letting them keep systems up-to-date while meeting their SLAs. Automated vulnerability assessment discovers missing patches and updates and reports on recommended actions, letting IT administrators remediate the situation before problems occur.

Through integration with Windows Server 2008 Network Access Protection (NAP), Configuration Manager helps IT administrators ensure that computers connecting to or communicating on their network have the required updates to meet administrator-defined requirements for system health. Configuration Manager can provide remediation for non-compliant

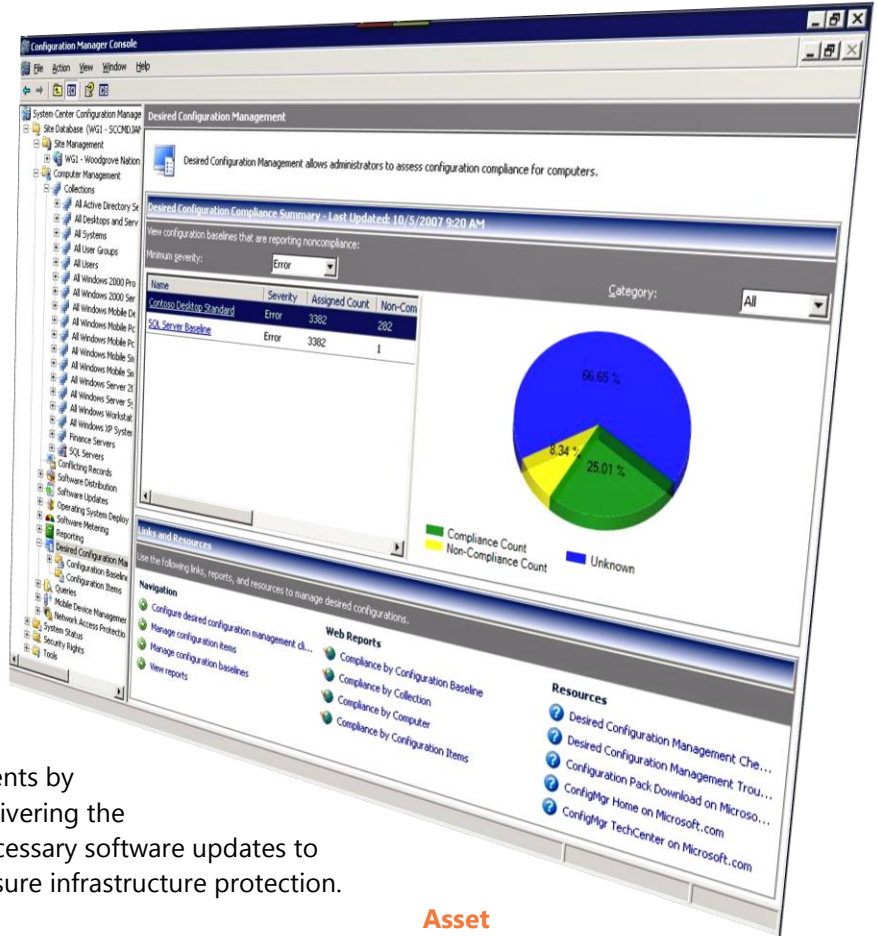
clients by delivering the necessary software updates to ensure infrastructure protection.

### Enhanced IT Infrastructure Insight and Control

Configuration Manager puts IT administrators firmly in control of their IT infrastructure by providing continuous visibility into what hardware and software assets they have, how they are configured, who is using them, and where the assets are. This helps them make informed decisions about their IT assets and proactively manage compliance with configuration standards to improve IT operations and mitigate compliance risks.

### Asset Intelligence


Asset Intelligence in Configuration Manager translates hardware and software inventory data into practical information that helps IT administrators define, track and proactively manage their IT infrastructure. Asset Intelligence provides the information IT departments need to make better business decisions about their IT assets and software licensing by automatically collecting inventory data and correlating that data against a catalog that is updated via a live connection.



© 2006 Microsoft Corporation. All rights reserved. The information contained in this document represents the current view of Microsoft Corporation on the issues discussed as of the date of publication. Because Microsoft must respond to changing market conditions, it should not be interpreted to be a commitment on the part of Microsoft, and Microsoft cannot guarantee the accuracy of any information presented after the date of publication. The information represents the product at the time this document was printed and should be used for planning purposes only. Information subject to change at any time without prior notice. This data sheet is for informational purposes only. MICROSOFT MAKES NO WARRANTIES, EXPRESS OR IMPLIED, IN THIS SUMMARY.

Microsoft, Active Directory, Windows, the Windows logo, and Windows Server System are either registered trademarks or trademarks of Microsoft Corporation in the United States and/or other countries.

All other trademarks are property of their respective owners.



Metering and reporting on the deployment and use of both physical and virtual applications further helps organizations make informed decisions about software licensing and maintain compliance with licensing agreements. IT administrators can easily track Windows Server and Exchange CAL usage and integration with SP1 with online functionality provides catalog updates, proactive industry alerts, and comparative reporting for MVLS customers that shows licenses utilized versus licenses purchased.

### **Desired Configuration Management**

Configuration Manager can help enhance the availability, security and performance of IT systems through Desired Configuration Management. By providing a means for IT organizations to ensure that their systems comply with a defined desired configuration state, Configuration Manager reduces problems associated with configuration drift and helps IT administrators manage systems proactively for configuration compliance against corporate and regulatory standards. Configuration Manager provides Microsoft and third-party Configuration Packs that IT departments can use as a basis for

their desired configuration definitions. These Configuration Packs, based on the Service Modeling Language (SML), define best practices that help avoid common configuration errors and help ensure that systems remain in compliance with regulatory requirements such as Sarbanes-Oxley and HIPAA. IT administrators can leverage these configuration standards and can define their own configuration baselines to build configuration knowledge appropriate to their environment.

The Desired Configuration Management home page streamlines reporting so that IT administrators can quickly identify and remediate non-compliant systems.

### **Optimized for Windows and Extensible Beyond**

The powerful capabilities of Configuration Manager builds on and integrates with the Microsoft platform and include operating system and application knowledge so that administrators benefit from a familiar, easy-to-use solution that is optimized for Windows. By integrating with Windows tools such as Automated Installation Kit (AIK), WinPE, ImageX, the Windows Image (WIM) format and services such as Microsoft Update and Active Directory, Configuration

Manager gives IT administrators flexibility and interchangeability making management more efficient and letting enterprises maximize their investment in Windows technologies.

Configuration Manager gives IT departments a flexible administration experience that they can easily customize to meet the needs of their organization. They can capture knowledge about their specific IT infrastructure into Configuration Management Packs and leverage Partner Configuration Packs to include best practice knowledge for common enterprise applications. In addition, they can extend Configuration Manager to support deployment of third-party applications, hardware and software updates and desired state configuration of custom and third-party applications.

System Center Configuration Manager 2007 is the solution to comprehensively assess, deploy and update Windows servers, clients, and devices—across physical, virtual, distributed and mobile environments—that, optimized for Windows and extensible beyond, is the best choice for gaining enhanced insight into and control over IT systems.

**To learn more about System Center Configuration Manager visit <http://www.microsoft.com/systemcenter/configmgr>**

© 2006 Microsoft Corporation. All rights reserved. The information contained in this document represents the current view of Microsoft Corporation on the issues discussed as of the date of publication. Because Microsoft must respond to changing market conditions, it should not be interpreted to be a commitment on the part of Microsoft, and Microsoft cannot guarantee the accuracy of any information presented after the date of publication. The information represents the product at the time this document was printed and should be used for planning purposes only. Information subject to change at any time without prior notice. This data sheet is for informational purposes only. MICROSOFT MAKES NO WARRANTIES, EXPRESS OR IMPLIED, IN THIS SUMMARY.

Microsoft, Active Directory, Windows, the Windows logo, and Windows Server System are either registered trademarks or trademarks of Microsoft Corporation in the United States and/or other countries.

All other trademarks are property of their respective owners.